

# 52-ft Luxury Motor Yacht

THE completion of the latest of a class of motor yachts known as the Philip-Fifty by Philip and Son, of Dartmouth, marks a turning point in the concern's long history. Although it has built many fine yachts in the past, it has been primarily engaged in the construction of steel commercial vessels and craft for the Services. Now it is to turn principally to yachtbuilding, and other standard craft probably based on the successful Fifty are to be laid down and offered through their subsidiary organization, Dart Marina Ltd., Sandquay, Dartmouth.

We went to sea recently in the Fifty, of which the general arrangement and a perspective diagram of the lines are reproduced opposite as an inset. A strong, north-easterly wind worked up a heavy swell and made for anything but comfortable cruising, but it was, nevertheless, ideal for trials because it provided a very fair idea of her seaworthiness, and in our view, she came through with flying colours. Four runs over a measured mile in Start Bay produced a mean speed of 9.91 knots which was good in the circumstances as the helmsman had to battle continually with a beam sea, and good course keeping was right out of the question.

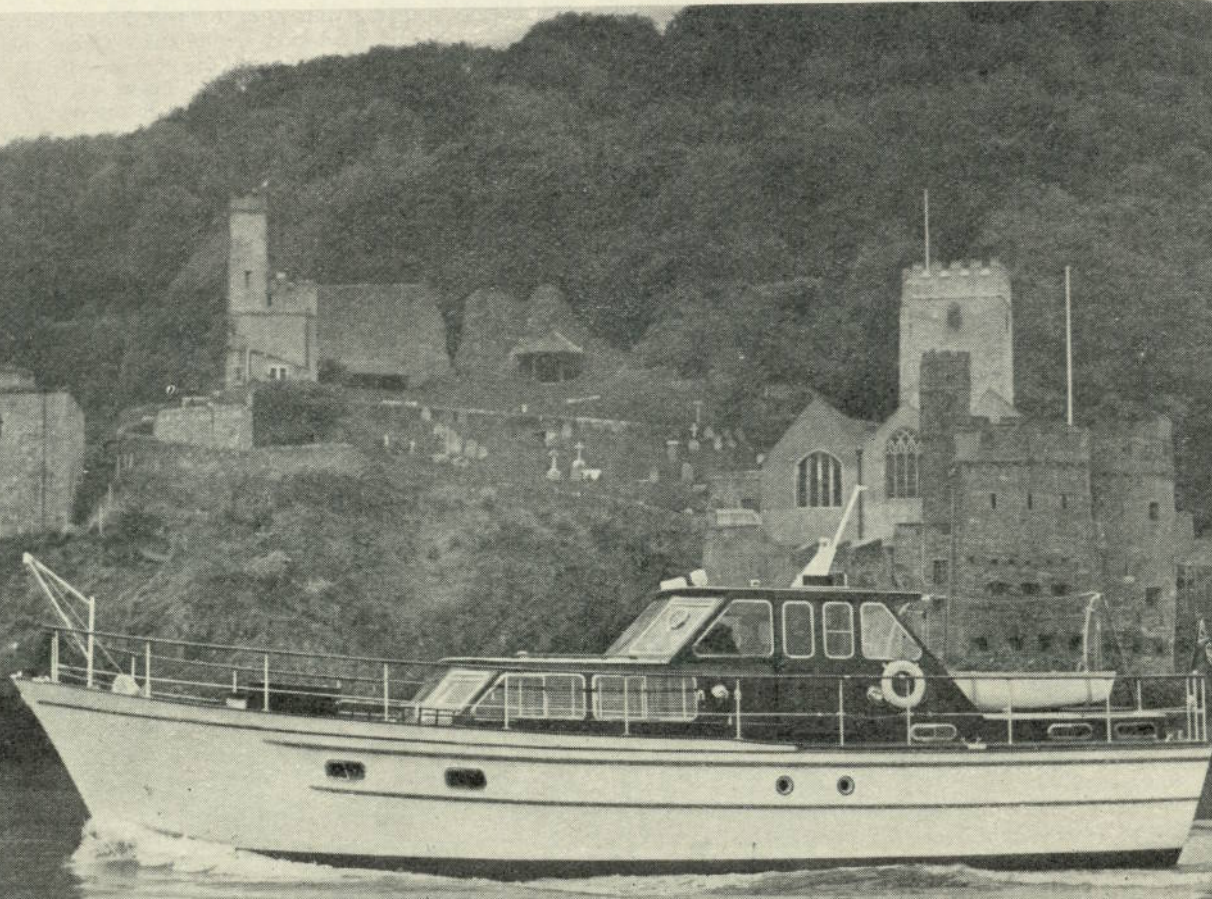
The Fifty is actually 52 ft. 6 in. overall in length, and is of 14 ft. beam and 4 ft. 3 in. draught. She is designed as a serious sea-going vessel and is substantially constructed of selected timber of heavy scantlings. For instance, the centreline framing—keel, stem and stern post, hog and deadwood—are of iroko which is a very durable wood. Timbers are of Canadian rock elm, 2½ in. by 1½ in. section spaced at 8-in. centres. Planking is of two skins of mahogany giving a total thickness of 1½ in. and the superstructure is of solid teak. All structural timber has been treated with Cuprinol before erection.

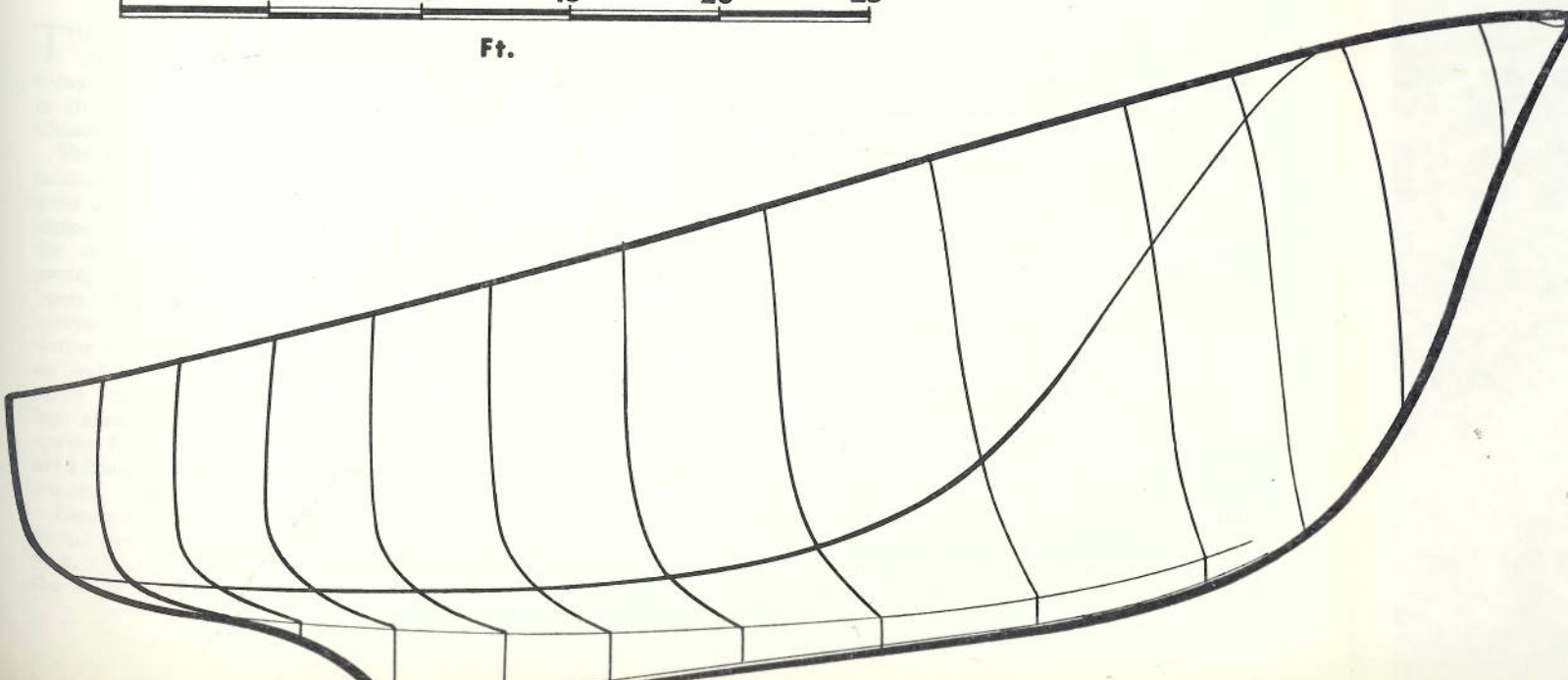
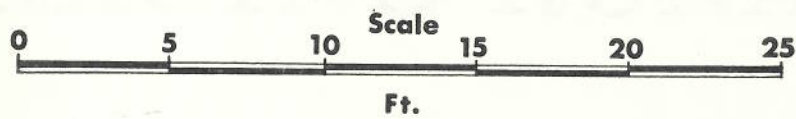
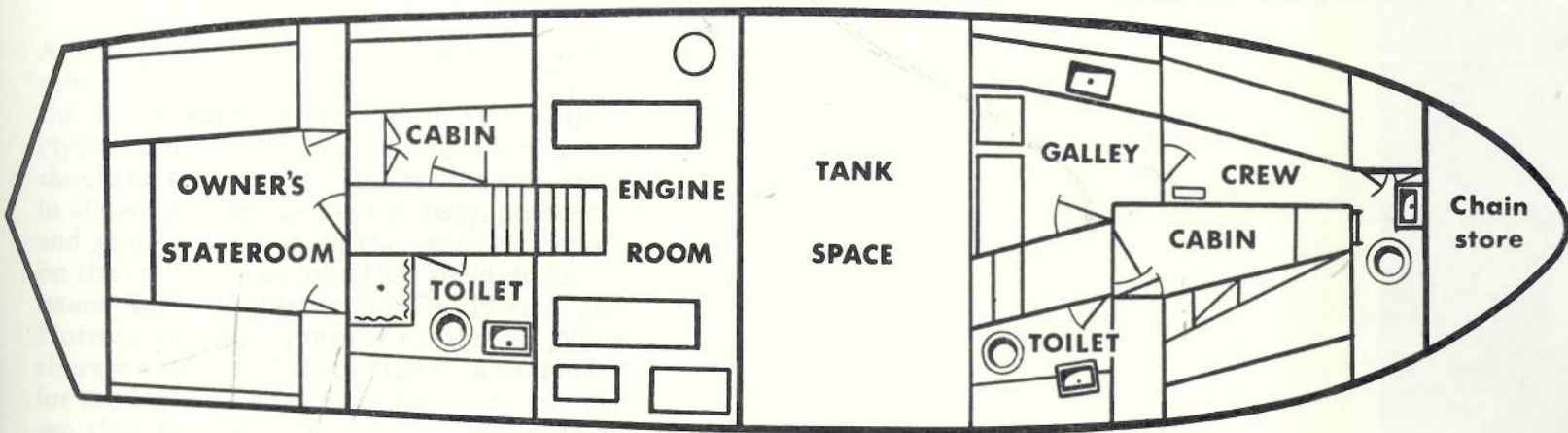
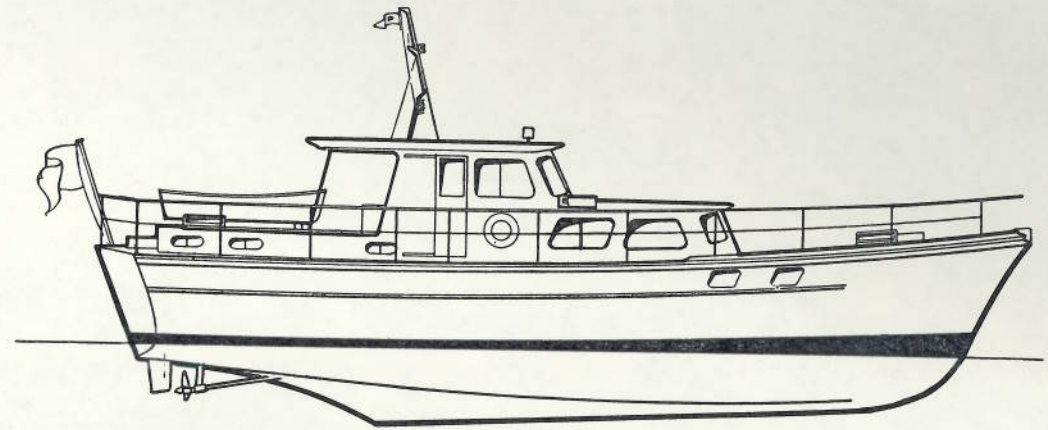
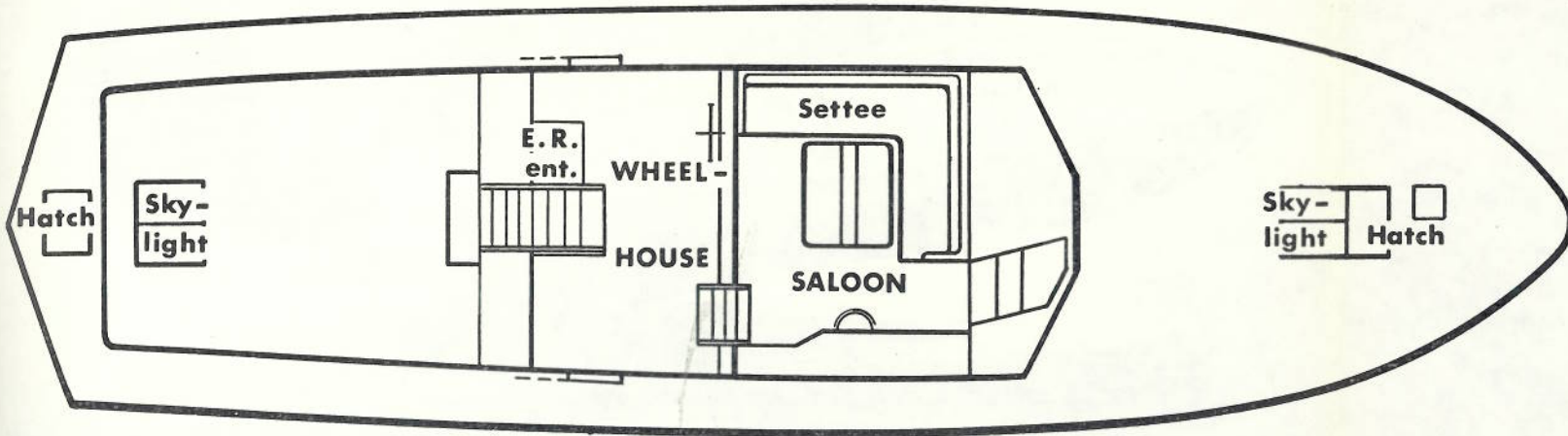
Two Perkins 6-354 normally aspirated diesel engines are installed and drive through oil-operated reverse 2-1 reduction gear boxes. The engines develop 105 h.p. at 2,400 r.p.m., are silently mounted, and have a fresh-water cooling system. The units are operated through Teleflex single-lever controls.

The installation is arranged in a single compartment beneath the wheelhouse. This is a modification on earlier installations when the engines were in separate compartments with a walk-through between. The new arrangement is much better and, as will be seen in a perusal of the general arrangement, uninterrupted access between the fore and aft parts of the craft is maintained. Fuel tanks, situated beneath the saloon flat, have a capacity of 370 gal. giving a cruising range of 800 miles. An auxiliary Lister Blackstone air-cooled engine is also installed and drives a 1½ kW. B.K.B. generator supplying 24 volts D.C. electrical current. Also installed is a Stuart electric bilge and deckwash pump.

Standard equipment supplied with the vessel includes Pye Solent battery-operated direction finder, Medway echo sounder, also a Kent Clear View rotary screen in the wheelhouse forward. Domestic equipment provided as standard in the class includes an electric-starting oil-fired boiler in the engine room to supply hot water to the galley, hand basins and shower, also a Godwin pressure unit in the fresh-water system. Good headroom throughout the vessel is a special feature and there is a minimum of 6 ft. 3 in. In all respects the Philip-Fifty is a well built and well appointed craft and we look forward to further developments at the Philip yard.

The yacht, with an excellent inventory, costs £20,750. Owners receive a six-month guarantee and can take advantage of an "after sales service" at the Dart Marina.





## PHILIP - FIFTY

Length o.a.	..	..	..	..	52 ft. 6 in.
Length w.l.	..	..	..	..	47 ft. 6 in.
Beam	..	..	..	..	14 ft.
Draught	..	..	..	..	4 ft. 3 in.
Engines	..	..	..	..	Twin Perkins 6-354 diesels each developing 105 h.p. at 2,400 r.p.m.
Speed	..	..	..	..	10½ knots
Fuel	..	..	..	..	350 gallons
Water	..	..	..	..	230 gallons
Cruising Range	..	..	..	..	800 miles
Builders	..	..	..	..	Philip and Son Ltd., Dartmouth, Devon.